

X-2200 Pro Video System Center

Video output	1080p, DVI*2, SDI*2
Light modes	WL, eWL, SFI/VIST chromoendoscopy
Digital zoom	Up to x2.0
IRIS	Peak/Average/Auto
Colour adjustment	Red, Blue, Chroma(±8 levels)
Air feeding pressure switching	4-level available (OFF/L/M/H)
Data management	External U Disk
White balance	Auto-saved available
Image enhancement	1-3 levels, 0-8 steps er level
Main Lamp	White light LED: 70W, Blue-violet LED: 130W
Brightness	Auto/Manual, 1-19 levels
Transillumination mode	6-8 seconds
Freeze an image using:	Scope button, keyboard, footstep of front panel “SNAP”
Hot plugging	Yes
Dimension [L x W x H/Weight]	491x376x179 mm/15.5 Kg

2200 Series Video Scopes

	EG-2200	EC-2200	EC-2200L
Field of view	140°		
Depth of view	3-100 mm	3-100 mm	
Distal-end diameter	9.3 mm	12.0 mm	
Insertion tube diameter	9.3 mm	12.5 mm	
Instrument channel diameter	2.8 mm	3.8 mm	
Angulation	Up 210° , Down 90° Left 100° , Right100°	Up 180° , Down 180° Left 160° , Right160°	
Working length	1050 mm	1350 mm	1700 mm
Total length	1400 mm	1700 mm	2050 mm
Waterjet	YES		
Connection	One step connection , waterproof		
Compatibility	X-2200 Series		



SonoScape Medical Corp.
2F, 12th Building, Shenzhen Software Park Phase II, Keji Middle
2nd Road, Shenzhen, China
Tel: +86-755-26722890 Fax: +86-755-26722850
Email: market@sonoscape.net www.sonoscape.com

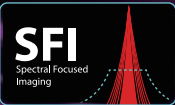
ISO 13485 CE 0197

E-X2200PRO20221104



ADVANCED IMAGING
WITHIN REACH

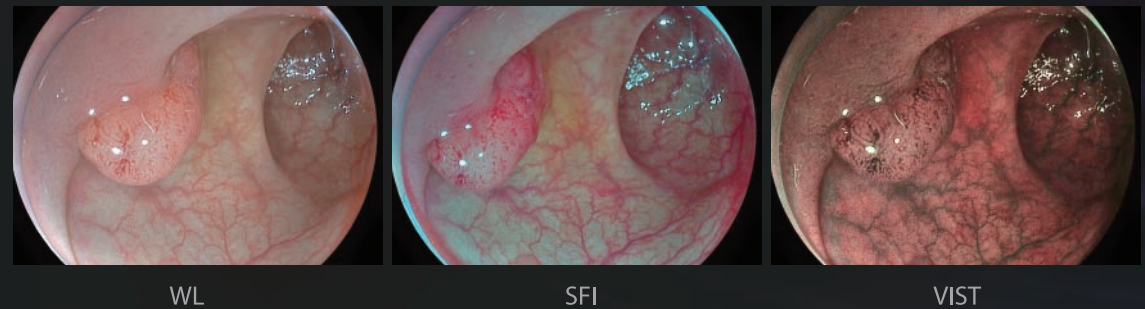
*X-2200 Pro,
High Definition Video System Center
Integrated with 2-LED Light Source
and SFI/VIST Technology*



X-2200 Pro is SonoScape's first compact system, designed for frontline healthcare professionals. Inheriting the technology know how from larger, successful models, X-2200 Pro is a one-stop, cost-effective solution, that brings the same high-definition experience found in the most premium endoscopy units. Simple to set-up and space efficient, X-2200 Pro comes with all essential features adjustable directly from the control panel and the possibility of adding external memory.

Superior and reliable performance

Benefit from the superiority of high definition under the White Light, or system's multi-spectrum and multi-mode imaging SFI¹ and VIST², where the vascular colour contrast and mucosal structure are greatly enhanced.



Newly developed scope tubing

The X-2200 Pro is paired with the specially designed 2200 series, scopes of an upgraded tubing. They offer great comfort and ease during a variety of operations, helping to shorten the procedure time, and to reduce both patients' discomfort and yours.



A handy deployment

One step connection, and real waterproof, the 2200 series scopes can be plugged and unplugged, cleaned and disinfected straightforwardly at a minimal risk of water damage by mismanipulation.

Longer operating life with two-LED lights

Enjoy the brightness for much longer before thinking about bulb replacement.

¹SFI: Spectral Focused Imaging
²VIST: Versatile Intelligence Staining Technology